



LEAD-FREE



COMPANY PROFILE

BRIEF ABOUT THE COMPANY

"Embarking on the journey towards a better future"

TREELAB (A UNIT OF BIRMI INTERNATIONAL) has come into existence with an exclusive range of innovative, eco-friendly and non-toxic **WPC** and **PVC** boards, vastly appreciated by both commercial and residential sectors.

The increase in the demand for the products carved out of woods is encouraging the cutting of approximately 7 billion trees every year. To overcome this complicated situation, **TREELAB** has innovatively designed a collective range of products which are considered to be the substitute for wood, durable and high-performing. We believe in carving the finest products and along with the team acquiring the best benchmarks in this distinct industry, **TREELAB** is capable of providing at par quality, reliable and enduring collection of products to the consumers and vendors.



VISION

TREELAB aspires to become an epitome of excellence by proffering the end-users supreme, durable and value-for-money products in terms of both efficiency and appearance. We entrust to achieve a resolute eminence by virtue of amicable relationships with the clients and faithfulness with our work ethics.

MISSION

The objective is to bring state-of-the-art product range according to the trend-shifts and by keeping the environmental sustainability in mind. By earning trusts of our customers with the high-appealing products, we intend to build a long-term association with clientele, vendors, and environment.

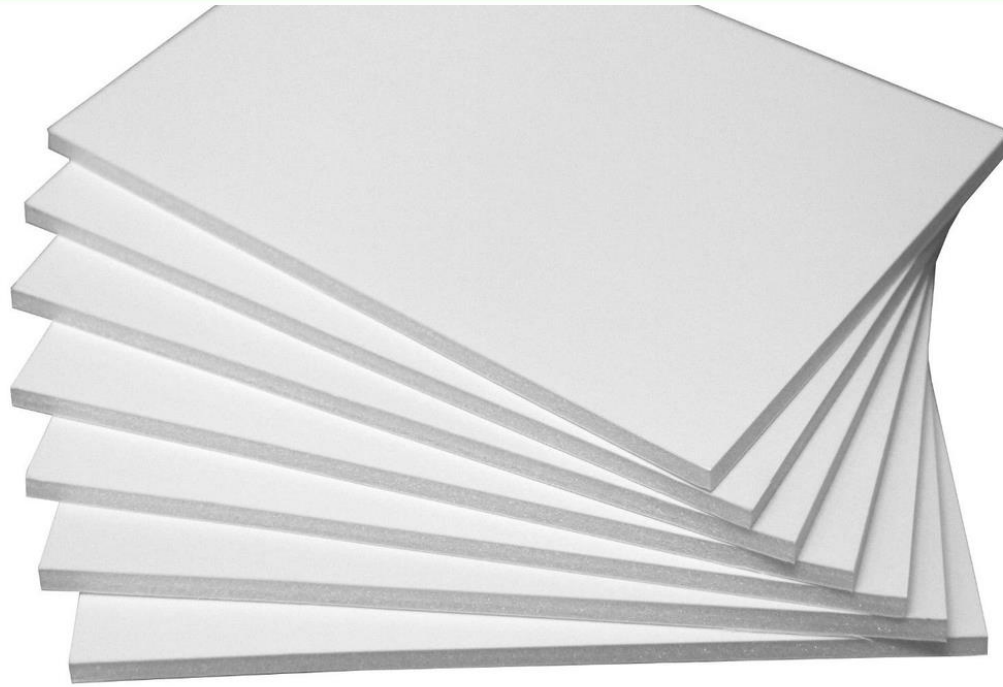


A UNIT OF BIRMI INTERNATIONAL

*Since 1993, **Birmi International** (an ISO 9001, 14001 Certified Company) has become prominent for the excellent quality products, unique designs and on time delivery schedules. The manufacturing unit boasts state-of-the-art machinery based on the advanced technology from Korea and Germany. The entire facility is backed by the highly proficient and experienced manpower along with an assurance of precision at every stage of production.*

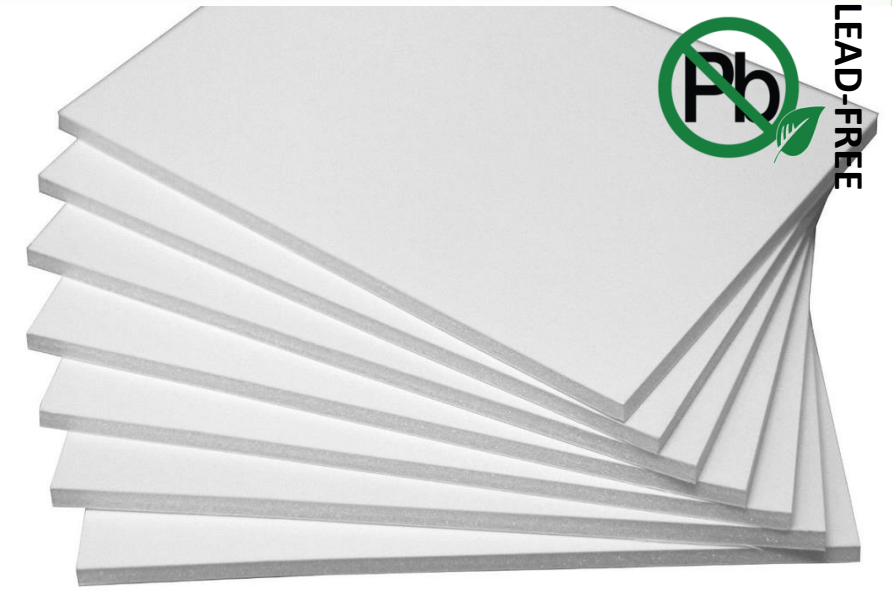


WPC/PVC



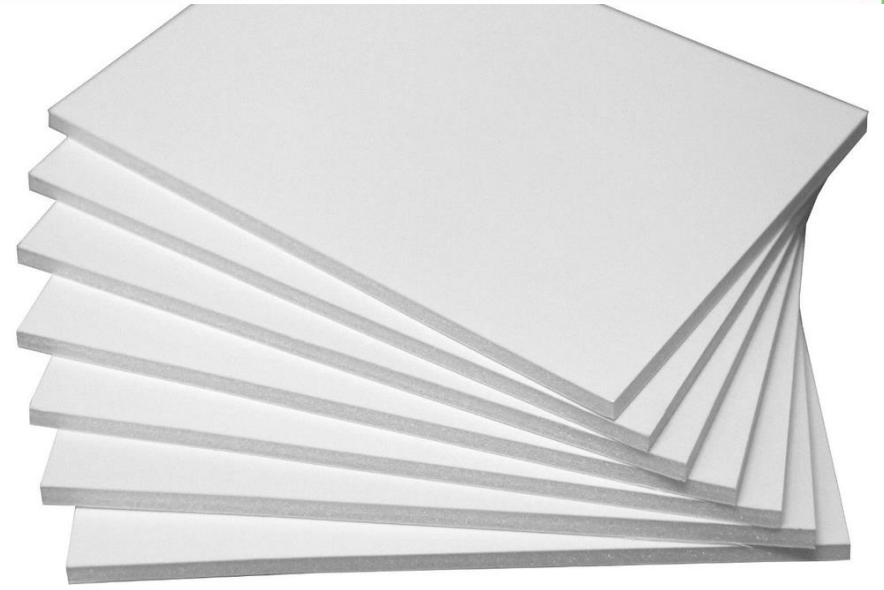
LEAD-FREE

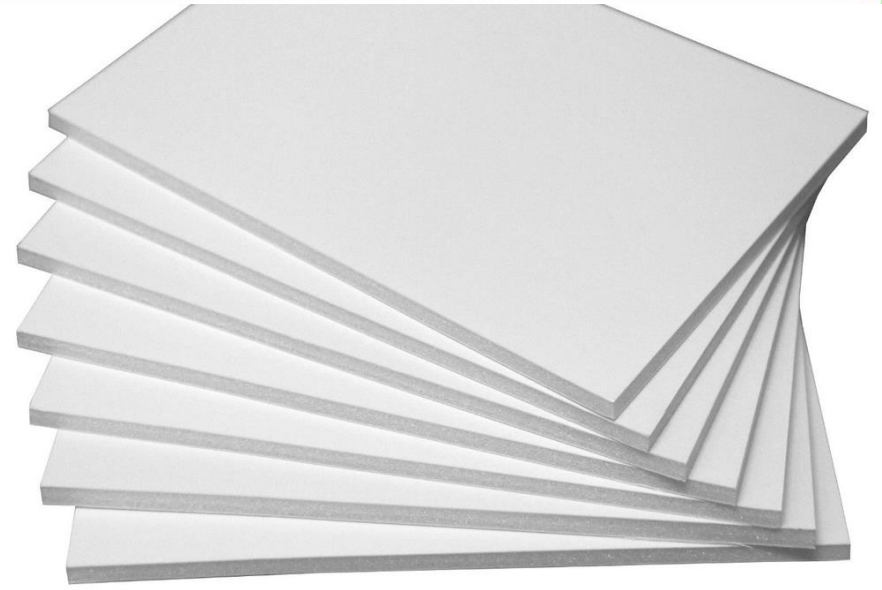




Uses Of WPC/PVC

The most widespread uses of WPC/PVC is in **railings, fences, landscaping timbers, cladding** and **siding, park benches, molding and trim, window, floorings** and **door frames**, and **indoor furniture**.





USPs



LEAD-FREE



RAT PROOF



Fire Retardant/
Self Extinguishing



Termite
Proof



Maintenance
Free



No Splitting
& Cracking



Go Green



Rot &
Decay free



Water & Moisture
Proof



Easy
Installation



Mold
Resistant



100%
Recycle



AVAILABLE RANGE OF WPC/PVC



LEAD-FREE



DENSITY

0.45mm

0.55mm

0.65mm



WPC/PVC DOORS

DURABLE | WATER RESISTANT | PAINTABLE

TREELAB is capable of providing high performing and long lasting WPC/PVC doors to adorn the interior of your home.



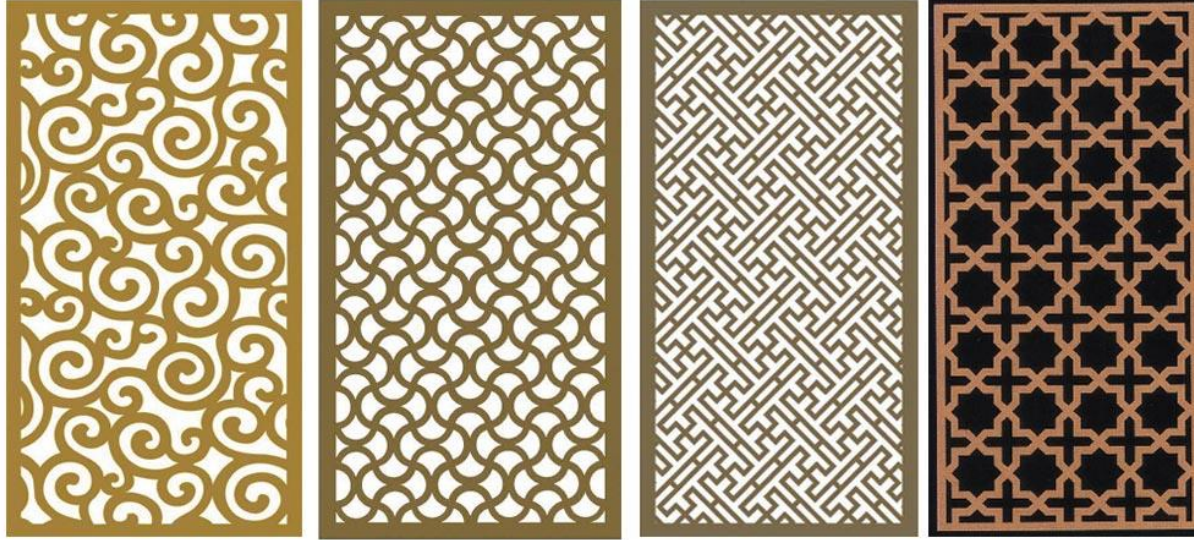


WPC/PVC FLOORINGS

FIRE RESISTANT | TERMITE PROOF

WPC/PVC flooring the future product will be the water-proof and durable in the event of a spill or moisture. WPC flooring is a plank system with a glue-less locking system similar to a laminate installation.





DECORATIVE WPC/PVC

MOLD RESISTANT | DECAY PROOF | RECYCLABLE

We provide dimensional accurate and stability in varying humidity and high screw holding capacity, high shock and buckling resistant, range of Decorative WPC/PVC .





WPC/PVC DOOR FRAMES

MOISTURE RESISTANT | EASY INSTALLATION

We're proficiently providing a range of WPC/PVC Door Frames that are waterproof, distortion resistant, and acquire a great adaptability to the outdoor conditions



FEATURES	TREELAB ECO FRIENDLY BOARD	PLYBOARD	PLASTBOARD
WEATHER RESISTANT	★ ★ ★ ★ ★	★ ★	★ ★ ★
FIRE RESISTANT	★ ★ ★ ★ ★	★ ★	★ ★ ★
TERMITE/RAT PROOF	★ ★ ★ ★ ★	★ ★ ★	★ ★
SOUND PROOFING	★ ★ ★ ★ ★	★ ★ ★ ★ ★	★ ★ ★ ★ ★
WATER/MOISTURE PROOF	★ ★ ★ ★ ★	★ ★	★ ★ ★
EASY INSTALLATION	★ ★ ★ ★ ★	★ ★	★ ★
STURDINESS	★ ★ ★ ★ ★	★ ★	★ ★
CAN BE NAILED	★ ★ ★ ★ ★	✗	★ ★ ★ ★ ★
LIGHT WEIGHTED	★ ★ ★ ★ ★	★ ★ ★	★ ★ ★
WORKABILITY	★ ★ ★ ★ ★	★ ★ ★ ★ ★	★ ★ ★
NO SPLITTING/CRACKING	★ ★ ★ ★ ★	★ ★	★ ★ ★ ★ ★
ELECTRIC CONTROL	★ ★ ★ ★ ★	✗	★ ★ ★ ★ ★

WHY TO CHOOSE TREELAB WPC/PVC?





**ECO
FRIENDLY**



**LEAD
FREE**



**100%
RECYCLE**

ENVIRONMENT FRIENDLY

WPC and PVC are considered to be the substitutes for wood. Giving the look and feel of wood yet preserving billions of trees from being cut down to construct luxurious products for beautifying the interior and exterior of the houses/offices/hotels.

These are 100% recyclable and are the most appropriate material in perspective of both environmental and social impacts.



THANK YOU!



www.treelab.in



+91-9306755120



Near Gyan Mansover,
Bramkumaris, Mahiyudin Pur,
Thirana, Tehsil Madlauda
Dist. Panipat- 132103 (Haryana)

